

## Before You Begin:

Verify Compatibility.

The EVALuator software will only work on Windows XP, Windows Vista and Windows 7.

**This software is not Mac compatible.**

### IMPORTANT

Install the software before connecting any of the charger hardware to your PC.

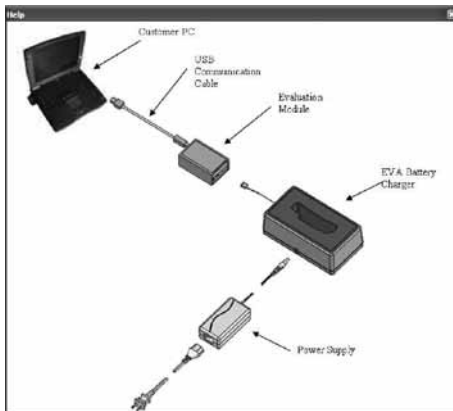
1. Insert EVALuator CD ROM into your PC.



2. Follow the onscreen menus to install and save the EVALuator software onto your PC.



3. Connect the EVALuator genius charger to your PC with the provided USB cable.
4. Connect the EVALuator genius charger to a 110 VAC outlet using the provided power supply and cord as shown in the diagram below: (note the analyzer may be used without connecting to 110 VAC but the battery will not charge).



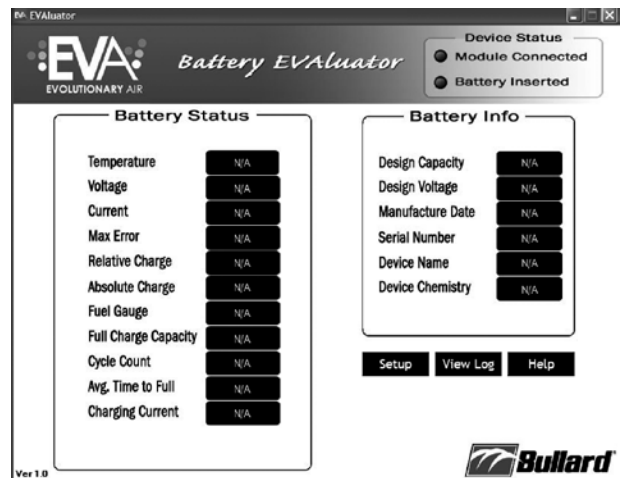
5. Install batter into charger base cup.

## Using EVALuator:

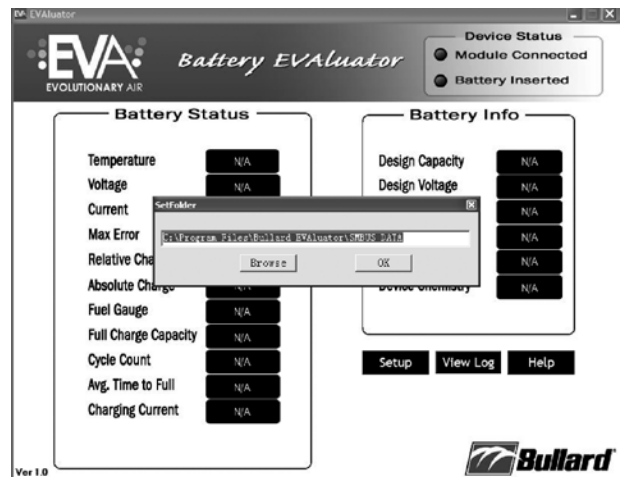
1. Click on the EVALuator icon on your PC's desktop to start the program.



2. If no battery is installed your screen will look like the image below:

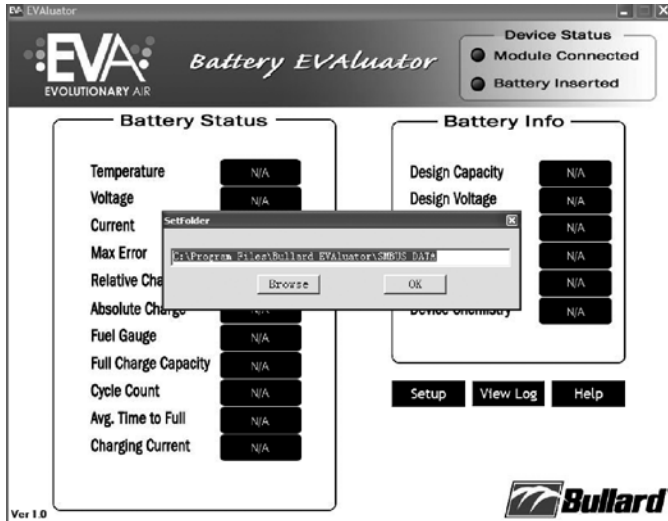


3. Click on Setup to create a folder to store battery analyzer results.
4. Click OK to accept the folder suggested or Browse to create a different folder.
5. Click OK to continue.



6. Click View Log to see the data that will be saved.

7. Click Save to save or Cancel to cancel.



8. The Battery Inserted Indicator on the top right will turn from red to green.  
The data on the screen will refresh every few seconds.

9. To save the data click View Log then Save.

## Key Points

- The Battery Info box on the screen shows the design capacity, design voltage, manufacture date, serial number, device name (Bullard part number), and chemistry.
- Bullard's limited warranty covering manufacturer defect and workmanship is good for 12 months from date of purchase.
- The Relative Charge is equal to the measured capacity divided by the full charge capacity.
- The Absolute Charge is equal to the measured capacity divided by the design capacity.
  - This will decrease over time as is the case with all batteries.
  - The expected capacity at end of the expected life is 50% (3150 mAh).
- The Fuel Gauge is the measured capacity at the moment in time.
- The Full Charge Capacity is the expected measured capacity when full.
- The expected life of a Li Ion battery is 600 cycles.

## Questions:

Call 877-Bullard or email: [info@bullard.com](mailto:info@bullard.com)

**Americas:**  
**E.D. Bullard Company**  
 1898 Safety Way  
 Cynthiana, KY 41031-9303  
 Toll free: 877-BULLARD (285-5273)  
 Tel: 859-234-6616  
 Fax: 859-234-8987  
[www.bullard.com](http://www.bullard.com)

**Europe:**  
**Bullard GmbH**  
 Lilienthalstrasse 12  
 53424 Remagen • Germany  
 Tel: +49-2642 999980  
 Fax : +49-2642 9999829  
[www.bullardextrem.com](http://www.bullardextrem.com)

**Asia-Pacific:**  
**Bullard Asia Pacific Pte. Ltd.**  
 LHK Building  
 701, Sims Drive, #04-03  
 Singapore 387383  
 Tel: +65-6745-0556  
 Fax: +65-6745-5176  
[www.bullard.com](http://www.bullard.com)

©2010 Bullard. All rights reserved.  
 EVA and EVALuator are trademarks of Bullard.

